

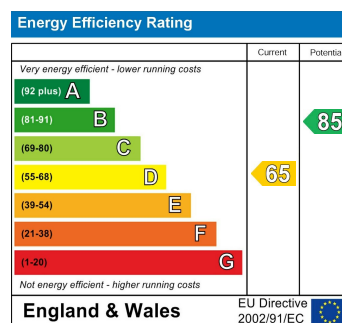
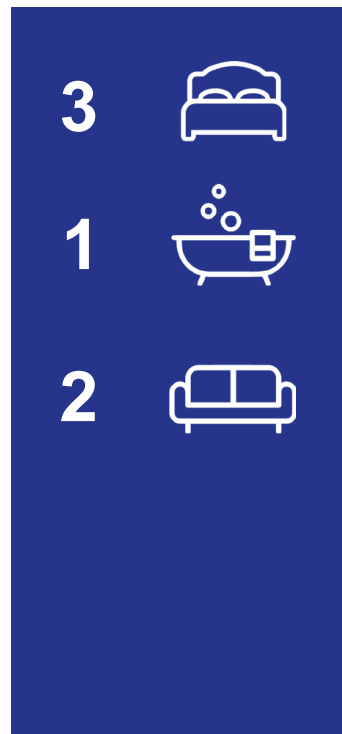
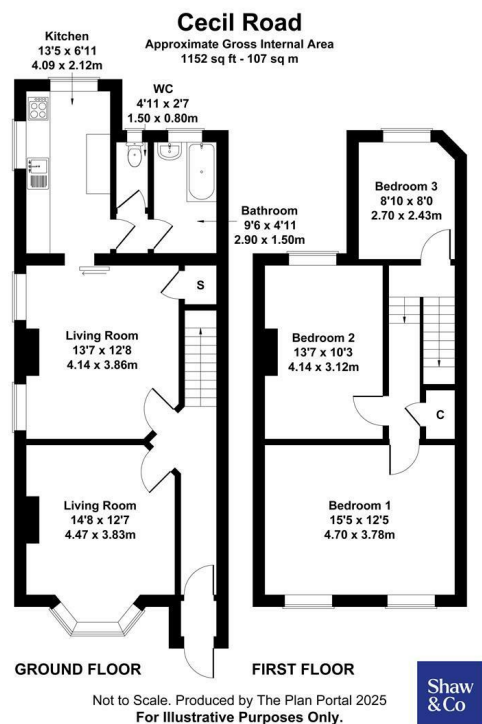
**Shaw
& Co**
ESTATE
AGENTS

£495,000

Cecil Road

Hounslow, TW3 1NT

**Shaw
& Co**



- Three Bedroom End Of Terrace House
- Double Bedrooms
- Walking Distance to Hounslow High Street
- Chain Free
- Potential to Extend (stpp)
- Fantastic Location

Agents Note: These particulars are for guidance only. All measurements area approximate and should be rechecked by buyers / tenants. While care has been taken to ensure accuracy, they should be solely relied upon.

**Shaw
& Co**
ESTATE
AGENTS

OFFICE ADDRESS
Whitton
Twickenham
TW2 7LT

OFFICE DETAILS
0208 894 3646
whitton@shawandcoestates.com